



ZAMBIA

Composition: 100% polyester

Width: 142 cm

Weight: 570 gsm

Zanzibar

Composition: 100% polyester

Width: 142 cm

Weight: 470 gsm

Repeat: horizontal: 7cm, vertical: 1.8cm

Direction: railroaded (selvedge to selvedge)

Dry clean / Wash in 30 degrees



ZAMBIA 7



ZANZIBAR 7



ZAMBIA 17



ZANZIBAR 17



ZAMBIA 3



ZANZIBAR 3



ZAMBIA 6



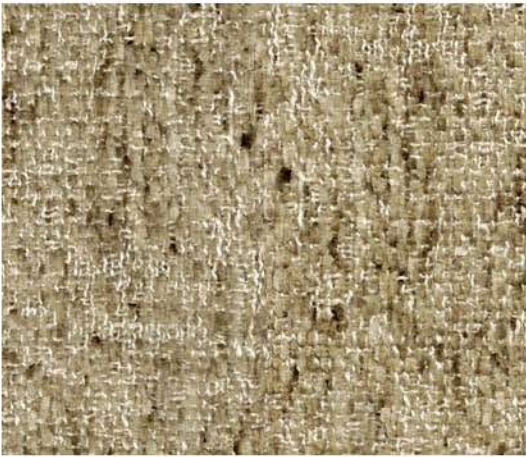
ZANZIBAR 6



ZAMBIA 4



ZANZIBAR 4



ZAMBIA 1



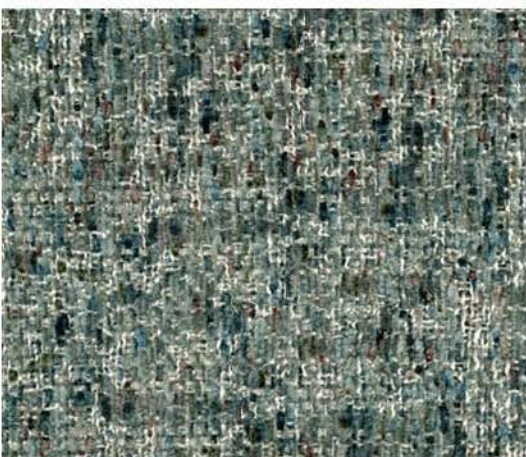
ZANZIBAR 1



ZAMBIA 11



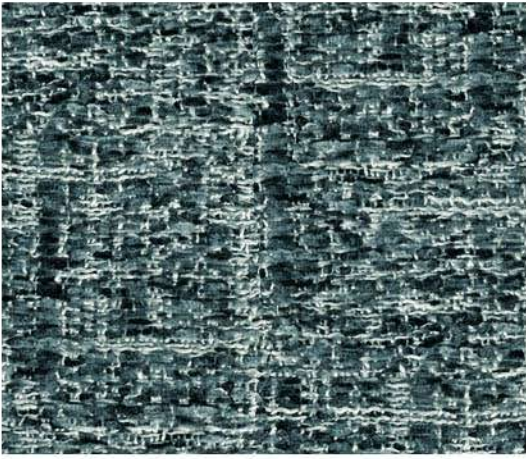
ZANZIBAR 11



ZAMBIA 2



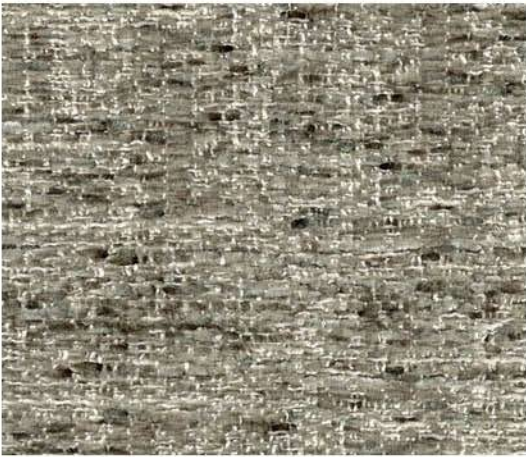
ZANZIBAR 2



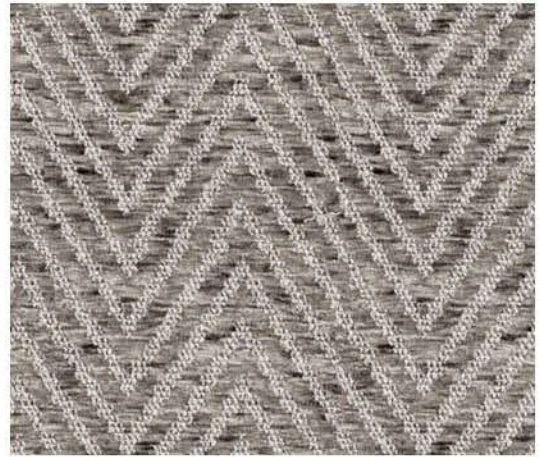
ZAMBIA 12



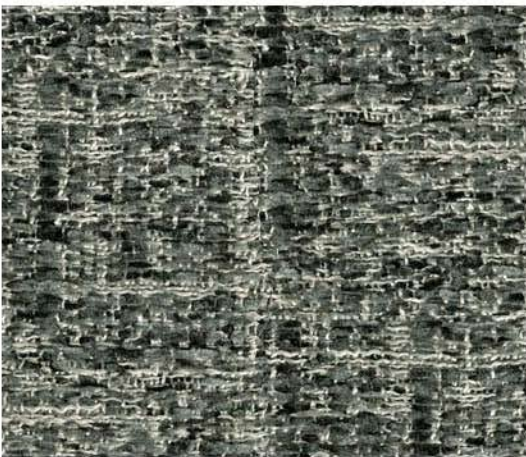
ZANZIBAR 12



ZAMBIA 20



ZANZIBAR 20



ZAMBIA 30



ZANZIBAR 30