

nachik 

Twilight

In, Out & All about
Outstanding Performance

**Bleach
Cleanable**



Outdoor, Water repellent, Anti-bacterial, Anti-mildew



Composition: 100% solution dyed polyester

Width: 140 cm, Weight: 530 gsm

Stripes vertical repeat 12.8 cm, stripe direction: railroaded (selvedge to selvedge)

Abrasion resistance: (BS EN ISO 12947-2/BS EN 14465: 2003 Annex a): >50,000 rubs

Change in shade @ 3000 revs: grade 4-5

Wyzenbeek Abrasion (ASTM D4157- wire screen method): >15,000 Double Rubs

Colour fastness to rubbing (dry): BS EN ISO 105 x 12: 2016: 4-5

Colour fastness to rubbing (wet): BS EN ISO 105 x 12: 2016: 3-4

Colour fastness to light: BS EN ISO 105 B02: 2014: white: 7-8, blue 8

Martindale pilling - BS EN ISO 12945-2: 2000: -4

Breaking (Tensile) Strength (ASTM D5034): Warp 335.4, Fill 259.3

Elongation (USF 1979-12): Warp 1.2, Fill 0.6

Tear Strength (ASTM D2261): Warp 52.5, Fill 94.3

Seam Slippage (Slippage at 6.4MM-1/4 inch) (ASTM D4034): Warp 100.5, Fill 85.8

Seam Strength (ASTM D1683): Warp 100.5, Fill 89.9

Crocking (AATCC-8-2007): Wet 4.5, Dry 4.5

Colorfastness to Light AATCC Test Method 16.3: 4 after 1000 AFU

Dynamic Seam Fatigue (ASTM D4033, DURANT): Warp/Fill (3500 cycles) 1mm,

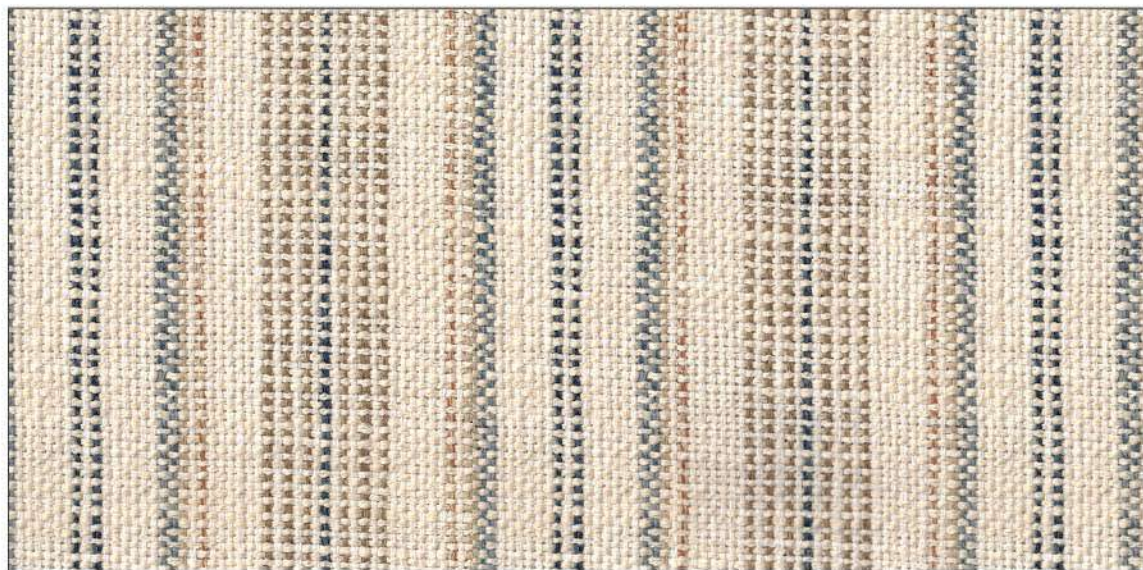
Warp/Warp (3500 cycles) 1mm, Fill/Fill (3500 cycles) 1mm

Anti-bacterial

Water repellent finish PFAS free

OEKO TEX

Fabric can be spot washed by sponging briskly with a soapy solution of natural soap in lukewarm water. Rinse thoroughly and allow to air dry. For stubborn stains and or mildew, chlorine bleach can be added to this solution it will not affect the color of the fabric.



TWILIGHT 107



TWILIGHT 105



TWILIGHT 104



TWILIGHT 101



TWILIGHT 102